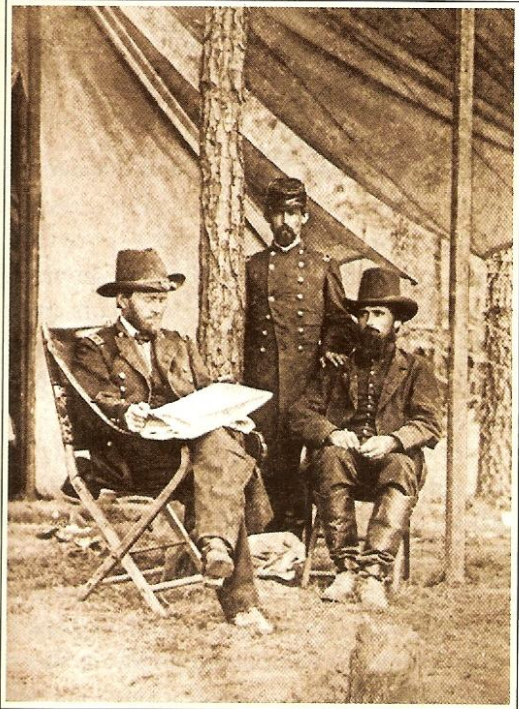
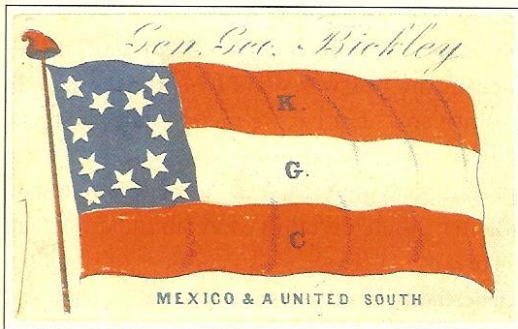


NORTH & SOUTH

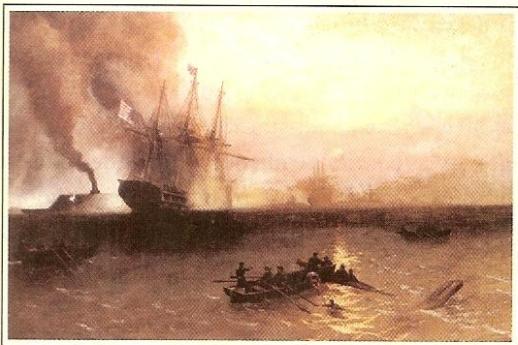
FEATURES



Ulysses S. Grant and two of his officers during the Overland Campaign.
(The Move to the James, page 16)



The K.G.C. Flag.
(Strong Arm of Secession, page 42)



The CSS *Virginia* demonstrates the impotence of wooden sailing ships.
(We Failed As I Was Sure We Would, page 80)

16 THE MOVE TO THE JAMES

Disengaging from an enemy army is one of the most difficult of military maneuvers. Doing so in secret is even harder!

—Gordon C. Rhea

30 AMERICAS FIRST WAR ON TERROR

The guns of the armies fell silent in 1865, but the violence continued.

—Stephen Budiansky

42 STRONG ARM OF SECESSION

Were the Knights of the Golden Circle more significant (in 1861) than is generally believed?

—David Keehn

58 REUNION

A veteran is reunited with a former enemy whose life he saved more than forty years earlier.

—David Wieck

68 SHERMAN'S RIGHT HAND MAN

Which of William Tecumseh Sherman's aides was described as "a man of genius"?

—Paul Taylor

80 WE FAILED AS I WAS SURE WE WOULD

The naval attack on Charleston and the subsequent fall of Rear Admiral Samuel Du Pont illustrate the difficulties of military-civilian interplay in high command.

—Kevin J. Weddle

DEPARTMENTS

- | | |
|-------------|---------------------------|
| 6 Editorial | 40 Civil War round Tables |
| 7 Crossfire | 41 Do you Know? |
| 10 Knapsack | 92 Briefings |